



URBANSCAPE

SELF-WATERING PLANTERS



✓ SAVE WATER ✓ SAVE LABOR ✓ SAVE FUEL



All Weather Resistant



Double Wall Construction



Crack & Impact Resistant



Lifetime Warranty



UV Protected



Proudly Made In Canada



Urbanscape Self-Watering Planters was born from a simple desire: to simplify urban gardening. We wanted to beautify our communities and commercial properties without the high costs associated with labor, water, and fuel for maintaining traditional flower pots. Our dream was to create vibrant floral displays that didn't require rigorous upkeep.

Since launching our first commercial self-watering planter in 2015, we've experienced continuous growth and are excited to share our innovation.

So, what exactly is a self-watering planter? While it doesn't water itself, it comes close. Our planters feature a built-in reservoir system that stores water at the bottom. The potting mix absorbs water as needed through capillary action, providing plants with consistent moisture for up to four weeks. This eliminates daily watering, reduces wasted resources, prevents over- or under-watering, and ensures beautiful, healthy plants.

Our commitment to excellence extends beyond mere functionality. We've created a range of planters in both classic and contemporary styles, ensuring that there's a perfect complement for any space. These planters are designed to be both visually appealing and durable and are backed by an industry-leading lifetime warranty.

Sincerely,

A handwritten signature in green ink that reads "Peter Klym".

Founder & President

How Urbanscape Self-Watering Planters Work

Self-watering planters simplify plant care. These planters effectively water themselves, ensuring your plants stay healthy with less frequent watering.

A water reservoir below the plant supplies water to the potting soil through capillary action (the wicking system). The soil absorbs water, allowing the roots to access the moisture they need. As the roots absorb water, the soil draws more from the reservoir to maintain consistent moisture levels.

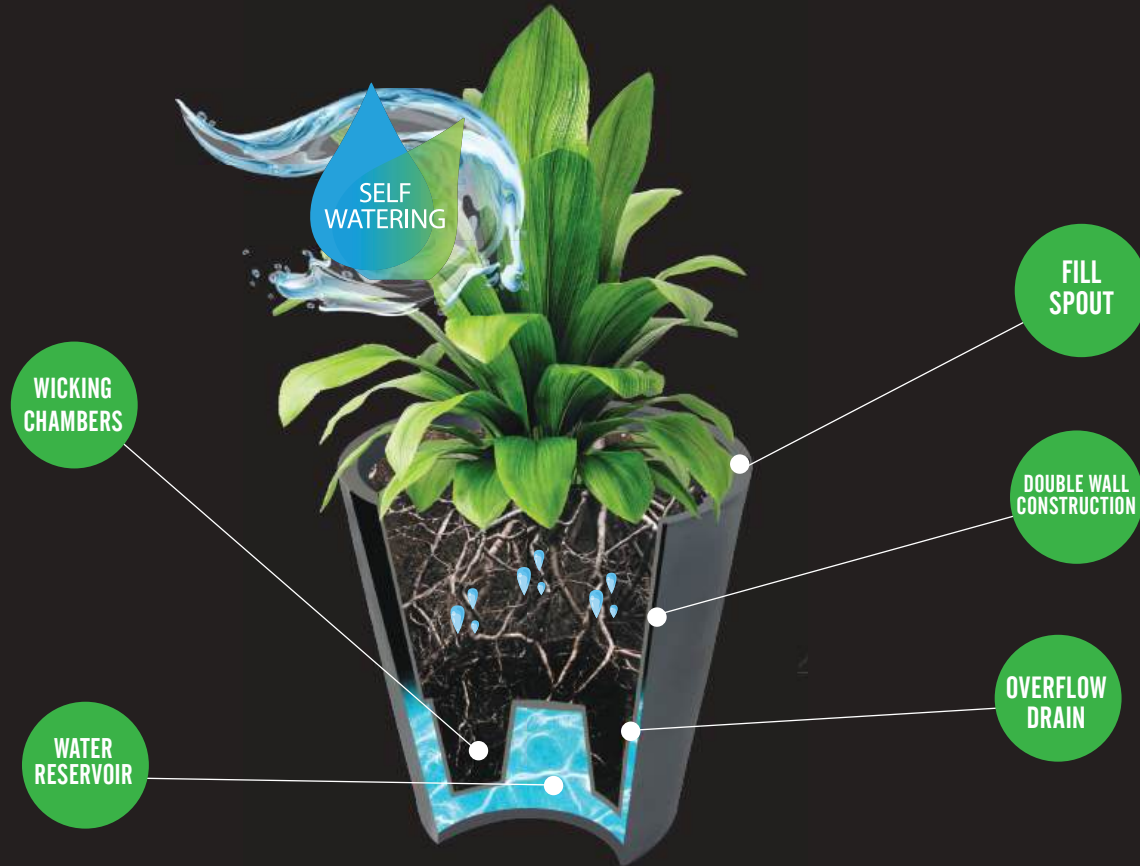
Capillary Action

Capillary action is the mechanism that makes self-watering planters work. It's how a sponge absorbs liquid and how plants draw water from their roots to their tops. This action ensures that the water absorbed by the roots is constantly replenished from the reservoir, keeping the soil consistently moist but not overly wet.

Benefits of Urbanscape Self-Watering Planters

- **Improved Plant Health:** They prevent overwatering and underwatering, ensuring plants receive the right amount of water.
- **Convenient Maintenance:** Our self-watering planters are designed to drastically reduce the amount of time and effort spent on plant maintenance. They eliminate the need to constantly monitor soil moisture and water levels.
- **Eco-Friendly:** They reduce water waste by regulating water usage through capillary action.

How Urbanscape Self-Watering Planters Work



Timeless Colors



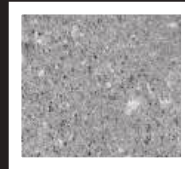
BLACK



BLACKSTONE



GRAPHITE



MILLSTONE



PEARL GREY



SANDSTONE



Reduce Water Consumption Conserve water and nurture thriving plants with our self-watering planters. These innovative planters feature a closed-system water reservoir that reduces water usage by up to 75%. By shielding water from the drying effects of sun and wind, our planters ensure moisture is retained and delivered to your plants only when needed. This efficient system minimizes water waste and promotes healthier plant growth by maintaining optimal soil moisture levels for extended periods.



Reduce Labor Costs Our self-watering planters offer a simple solution to time-consuming plant maintenance. The large water reservoir only needs refilling every 2- 3 weeks, eliminating the daily chore of watering. This saves you valuable time and energy for other priorities.



Reduce Fuel Costs Our self-watering planters help reduce fuel costs. By minimizing the need for frequent watering trips, particularly for larger gardens or commercial spaces, you can decrease the number of trips required to transport water. This reduction in trips leads to lower fuel consumption and a smaller carbon footprint.

UPTOWN PLANTER

34"DIA x 34"H

28"DIA x 30"H

24"DIA x 24"H

The Uptown planter, available in three sizes, offers a classic design and timeless versatility. Its simple, elegant design complements a range of decor styles, from traditional to modern. This classic planter seamlessly blends into any environment. The Uptown's minimalist or traditional styling ensures it won't become outdated, making it a perfect long-term choice for any setting.





COSMOPOLITAN

30"L x 30"W x 36"H

The Cosmopolitan planter boasts a minimalist, clean design with smooth lines and a contemporary, sophisticated look. It's the perfect statement piece for large plants, ornamental trees, and outdoor spaces.

METROPOLITAN

36"L x 36"W x 31"H

The Metropolitan effortlessly blends contemporary design and functionality, creating a striking focal point for any space. Whether you showcase lush blooms or vibrant seasonal flowers, its clean lines and versatile design will enhance the beauty of your plants and surroundings.



BREEZE PLANTER

20"DIA x 10"H

Hanging planters have always been a challenge for urban areas. Exposed to all of the elements, hanging planters dry out quickly and demand a lot of care. We have the solution! The Breeze Hanging planter is equipped with a high capacity water reservoir allowing this hanging planter to go up to one week without requiring water, even during the hottest of summer days. Plant food can be added directly to the water reservoir providing a continuous supply of nutrients resulting in impressive blooms.





CAMBRIDGE HANGING PLANTER

20"L x 20"W x 11"H

The Cambridge hanging planter is ideal for hanging from street light posts.

It is constructed from weather-resistant commercial grade material that will not crack or fade even in the harshest of environments. It comes equipped with a water reservoir that will provide one week in between watering and heavy duty rust proof stainless steel hardware and chains. Add some color to your streetscape.

MANHATTAN PLANTER

36"L x 36"W x 30"H

Contemporary meets traditional.

The Manhattan is a versatile planter that features perfectly placed lines and smooth curves that come together to add an elegant touch to any urban setting. Crafted in North America from UV protected thick gauge polyethylene, the Manhattan is resistant to all weather related cracking and fading even in the harshest of environments. It features drain free winterization, and thanks to our leading self watering technology there is never a risk of over or under watering. A perfect balance of design, durability, and functionality.



WELLINGTON CUBE PLANTER

24"L x 24"W x 26"H

The Wellington Cube offers a modern, bold, and structured look with its geometric, square design. Its clean, simple lines make it a popular choice for contemporary landscaping projects. The compact shape fits easily into tight spaces, corners, or symmetrical rows. It adds structure and clean lines to any space and pairs well with architectural plants like succulents, cacti, or ornamental grasses.



HAMPTON PLANTER

46"L x 18"W x 28"H

The Hampton self-watering planter is designed with a rectangular shape and a slight curve for a more modern and decorative appearance. It is the perfect choice for lining patios, sidewalks, and storefronts. Roto-molded using thick gauge polyethylene, the Hampton is known for its durability and resistance to harsh weather conditions. It is UV & crack-resistant and comes with a Lifetime Warranty.





SILHOUETTE LOW BOWL PLANTER

54" DIA x 17" H

The Silhouette Low Bowl planter provides ample space for your plants to thrive. Its generous surface area encourages healthy growth, while its low profile adds a relaxed, contemporary touch to any environment. The planter's large water reservoir makes it a perfect choice for those who want to incorporate greenery and style into their space with minimal upkeep.

KINGSTON PLANTER

30"L x 13"W x 36"H

It's time to redefine outdoor spaces. The sleek & modern Kingston planter is a perfect addition to freshen up any store front, patio, sidewalk, or commercial space. Engineered for the harshest of climates, the Kingston self watering planter is crack & fade resistant.





URBANSCAPE

SELF-WATERING PLANTERS

UrbanScape Self-Watering Planters are built to withstand freeze-thaw cycles and therefore do not require draining. The thick double walls are designed to allow ice to expand upward without causing damage. While you may still want to protect particularly sensitive plants, the planters themselves will not crack or break due to expanding ice or cold weather. Maintaining your planters in winter has never been easier!



URBANSCAPEPLANTERS.COM





URBANSCAPE

LIFETIME WARRANTY

Urbanscape Self-Watering Planters stands by the quality of our commercial self-watering planters. Each planter holds a **lifetime warranty** from the time of receiving the product. We warrant the initial purchaser of our products that they are of quality material, workmanship, and against any reasonable weather related cracking or fading.

Urbanscape Self-Watering Planters, at their sole discretion will repair, exchange, or provide credit of the original purchase price of any item proving to be defective. Mishandling, misuse, abuse, failure to follow directions for use, unauthorized modifications, neglect, or accidents voids the lifetime warranty.

Please note that **Urbanscape Self-Watering Planters** will not be liable for labour, shipping, delivery, or any other costs associated with a claim.

The Future In Urban Landscaping

URBANSCAPEPLANTERS.COM

1.800.439.4157

MADE IN CANADA

